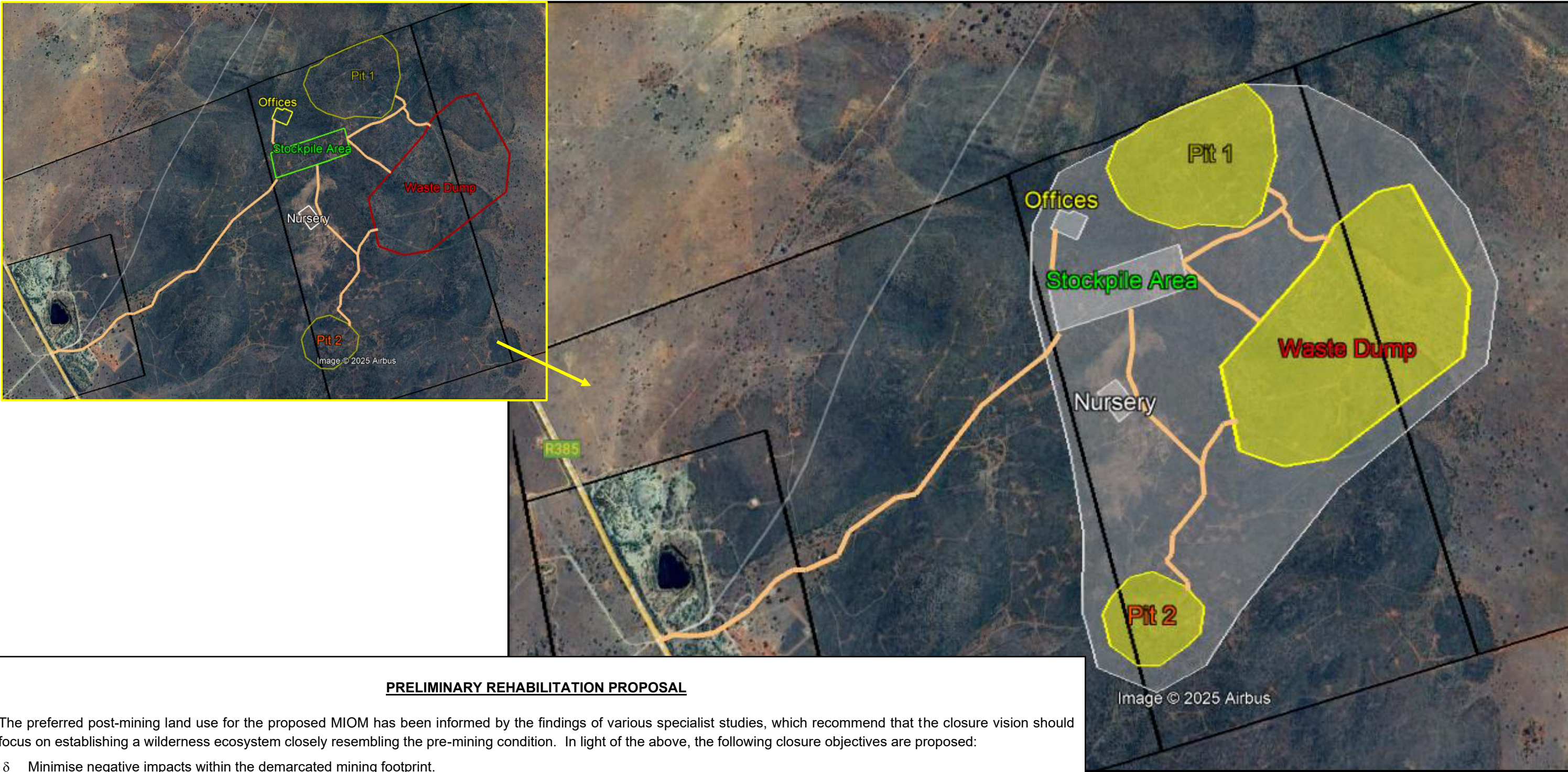


PRELIMINARY REHABILITATION MAP FOR THE ASSMANG (PTY) LTD MINING RIGHT OVER PORTION 2 (A PORTION OF PORTION 1), REMAINDER PORTION, REMAINDER PORTION OF PORTION 1 AND PORTION 3 OF THE FARM MAKGANYENE NO 667, TSANTSABANE LOCAL MUNICIPALITY, NORTHERN CAPE - NC 30/5/1/2/2/10255 MR



PRELIMINARY REHABILITATION PROPOSAL

The preferred post-mining land use for the proposed MIOM has been informed by the findings of various specialist studies, which recommend that the closure vision should focus on establishing a wilderness ecosystem closely resembling the pre-mining condition. In light of the above, the following closure objectives are proposed:

- δ Minimise negative impacts within the demarcated mining footprint.
- δ Prevent negative impacts outside of the demarcated mining footprint.
- δ Remove all equipment, infrastructure and materials that were introduced during the mining operation (*grey polygons above*).
- δ Reshape the mining footprint to a landform similar to the pre-mining condition, with stable gradients and topographical features that support a sustainable wilderness ecosystem (excluding Pits 1 and 2 and the waste rock dump, which will form new permanent features).
- δ Shape and stabilise Pits 1 and 2 and the waste rock dump into safe, sustainable landforms with gradients that minimise erosion and maximise ecosystem development.
- δ Remove unsafe edges in Pit 1 and 2 and on the waste rock dump (*yellow polygons above*).
- δ Ensure adequate, non-toxic, non-polluted, and non-compacted topsoil and subsoil are available to support indigenous vegetation from the on-site nursery.
- δ Eliminate visible erosion within the mining footprint and downslope areas and mitigate any future erosion risks through an erosion risk assessment and management plan.
- δ Prevent water pollution and toxicity in Pits 1 and 2.
- δ Prevent water pollution and toxicity in monitoring boreholes within the mining right area and in boreholes on neighbouring farms.
- δ Eradicate all alien and invasive plants in the 264 ha rehabilitation area (*encircling grey polygon above*).

